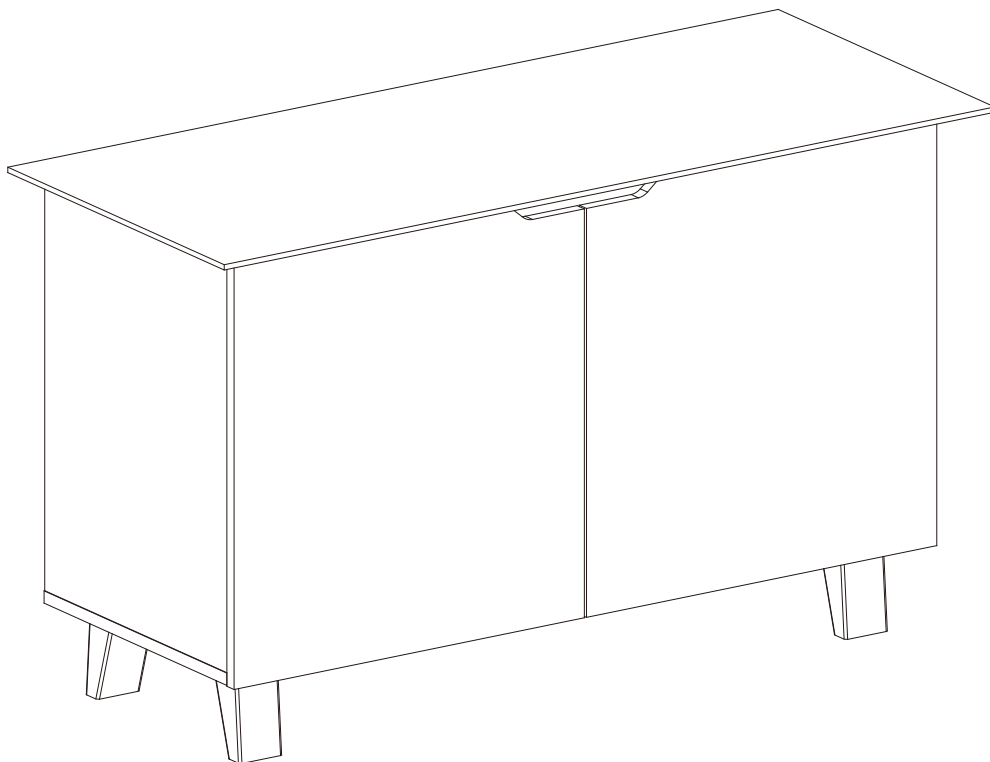




ASSEMBLY INSTRUCTION

OTLINCB

LINEAR CUPBOARD (2CTNS)



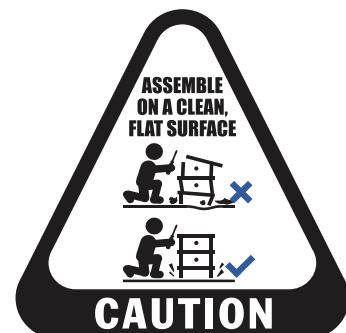
Important
Estimated Assemble time: 45min



MORE THAN 1 PERSON
IS REQUIRED TO SAFELY
ASSEMBLE THE ITEM



HOTLINE



ASSEMBLE ON A CLEAN,
FLAT SURFACE

Tools Required For Assembly



Please check you have all hardware components before assembling.

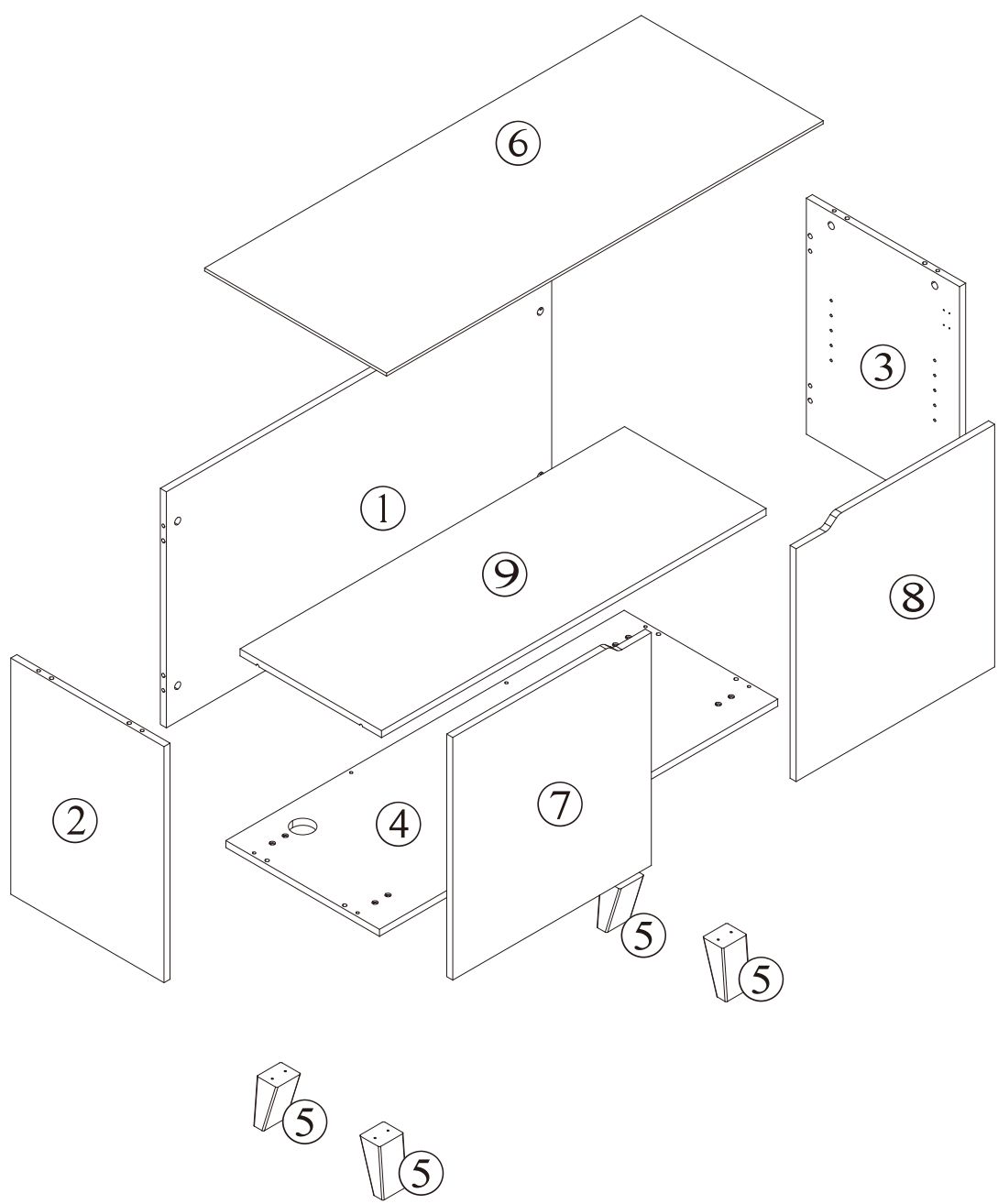
If you are missing any hardware components from the Hardware List please contact My Zone on Tel: (03) 9310 3011, or Email: hardware@myzone.net.au

Please ensure you have the name of the item, store purchased from, hardware part required and quantity.

If you are missing any panels from the Panel List please contact your store of purchase.

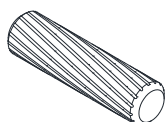
Please retain your receipt to validate warranty. Enjoy your new purchase!

Panel List



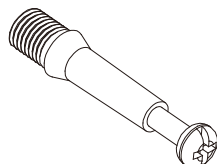
Hardware List

A



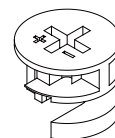
Ø7.8 X 30mm
12pcs

B



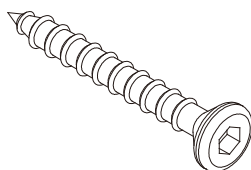
Ø6 X 35mm
8pcs

C



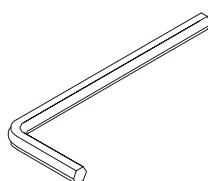
Ø15 X 12mm
8pcs

D



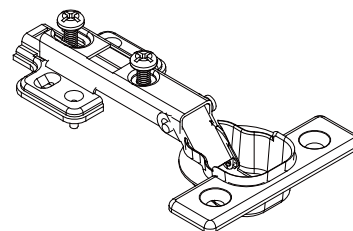
Ø5 X 40mm
14pcs

E



1pc

F



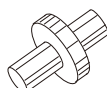
Hinge
4pcs

G



Ø3.5 X 14mm
24pcs

H



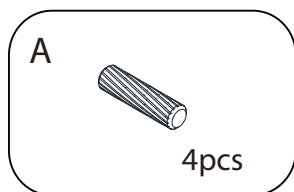
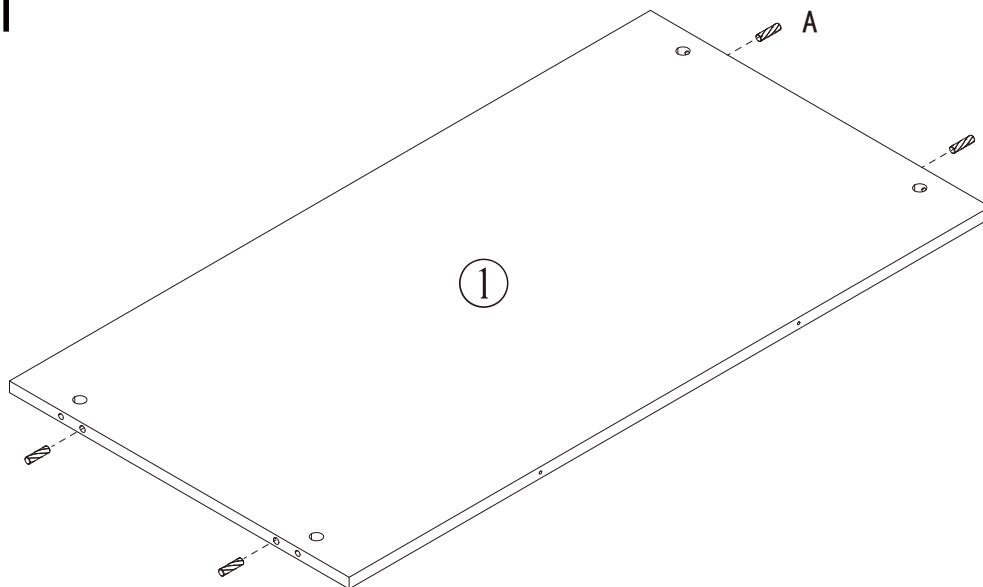
Shelf Support
4pcs

I

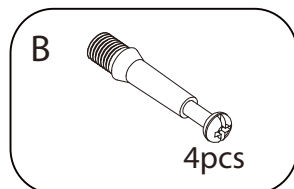
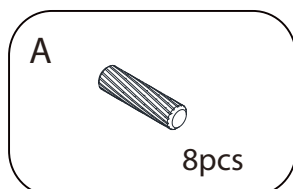
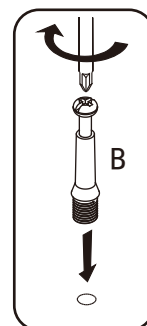
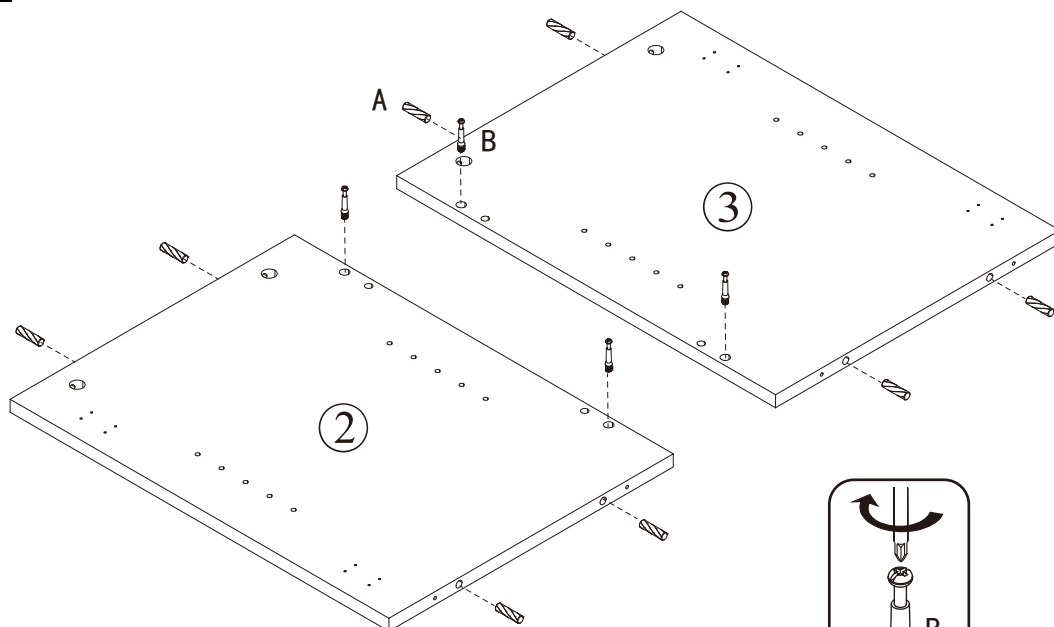


Sticker
16pcs

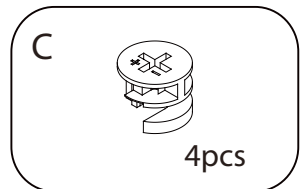
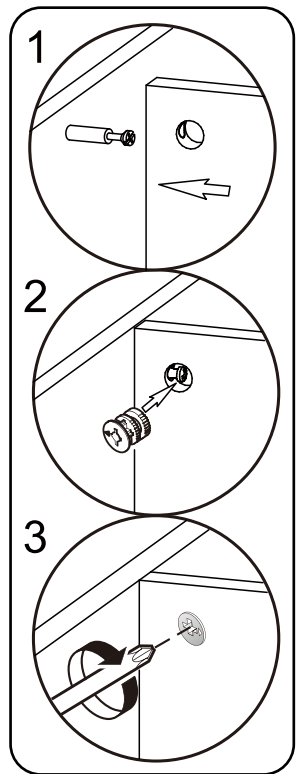
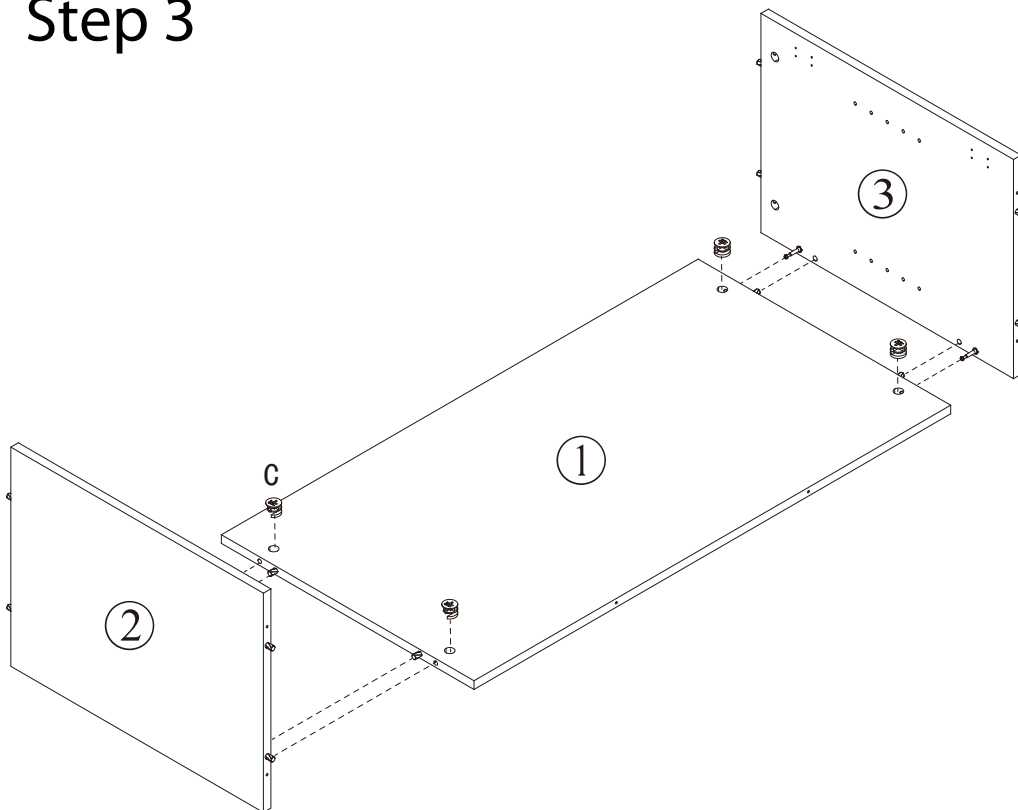
Step 1



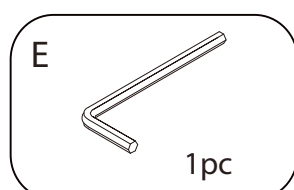
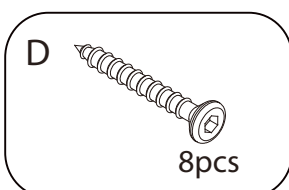
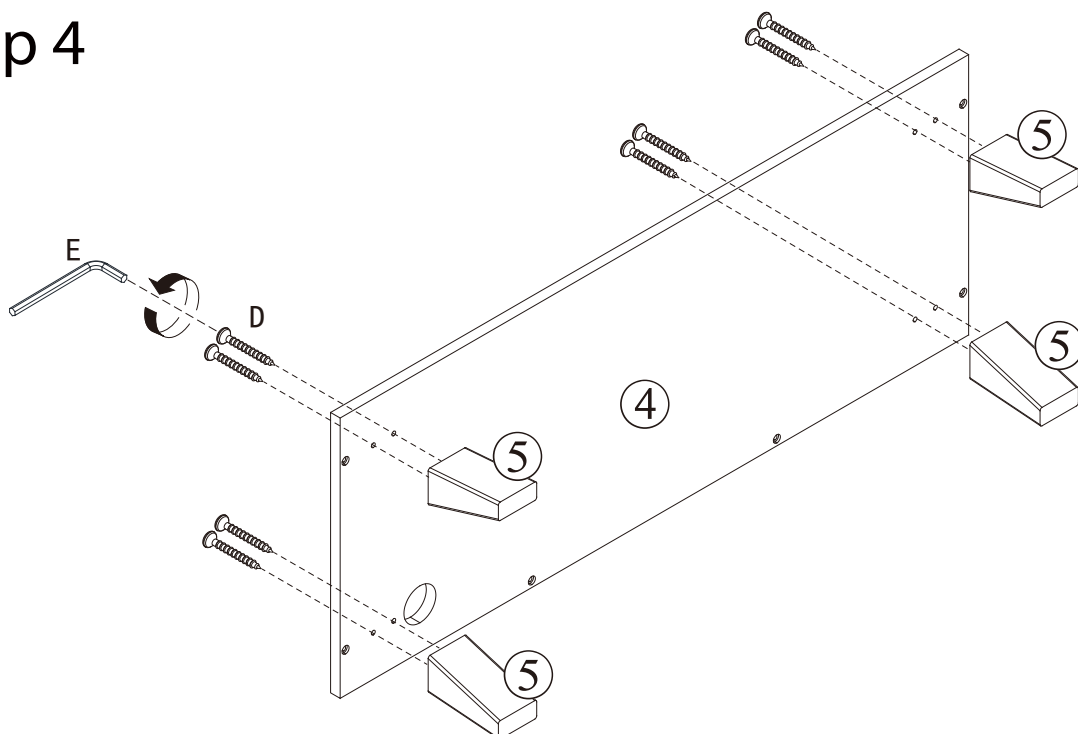
Step 2



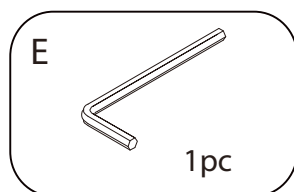
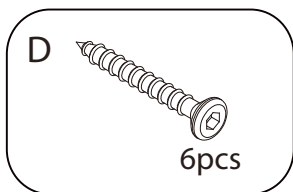
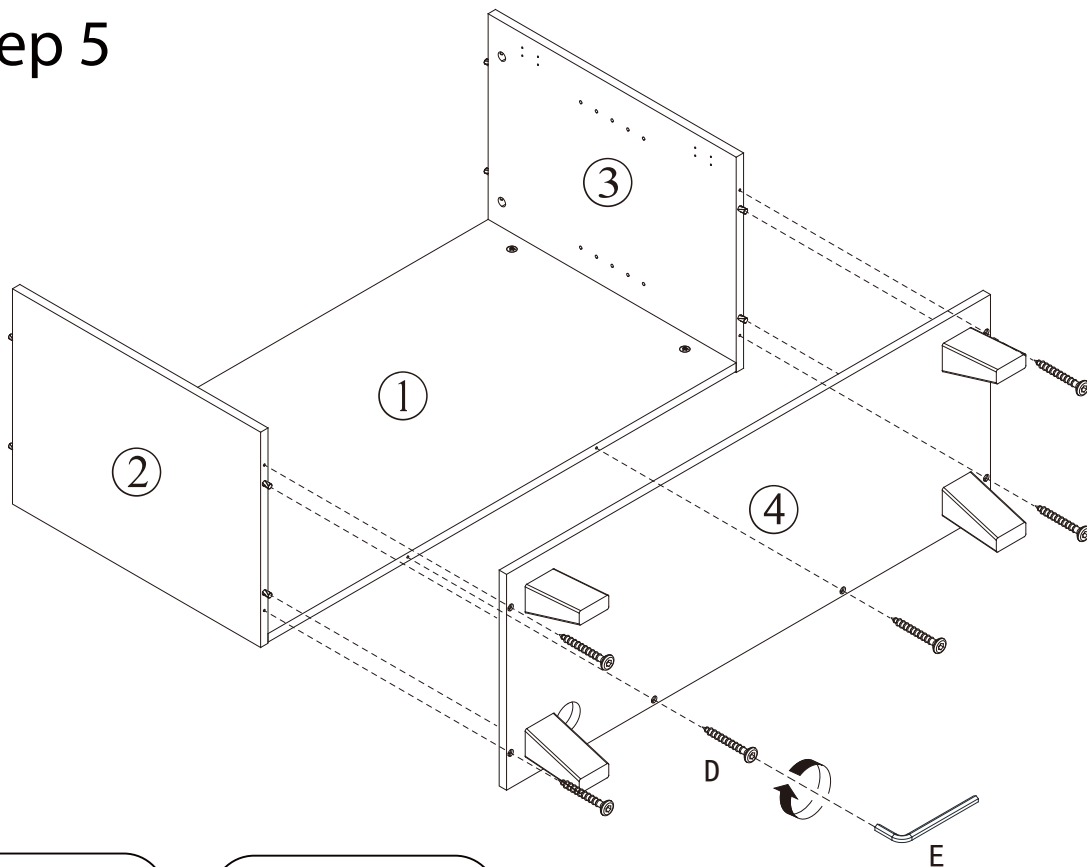
Step 3



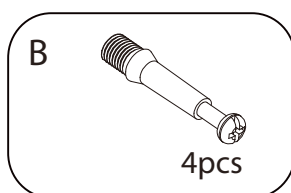
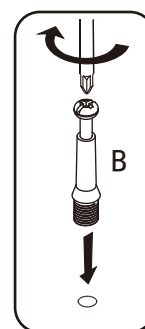
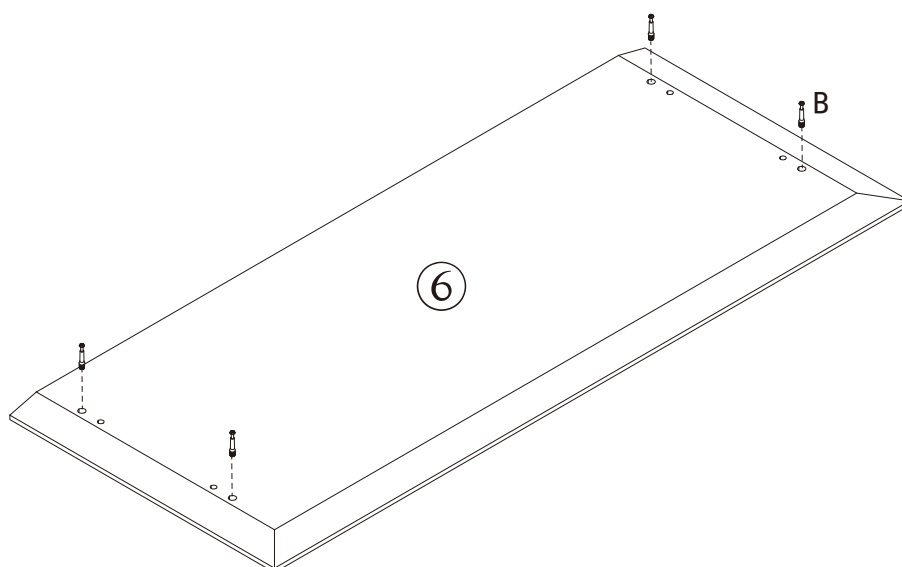
Step 4



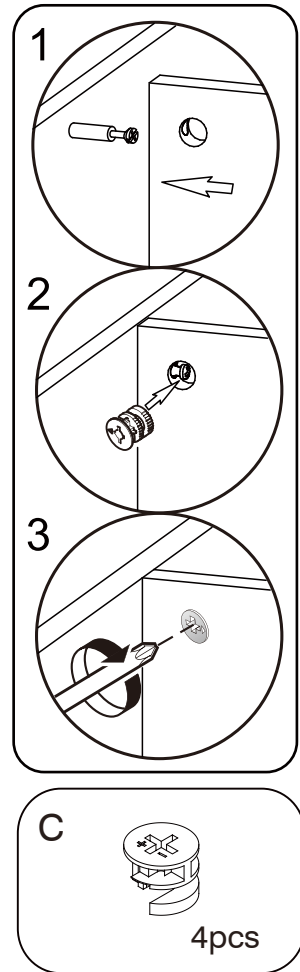
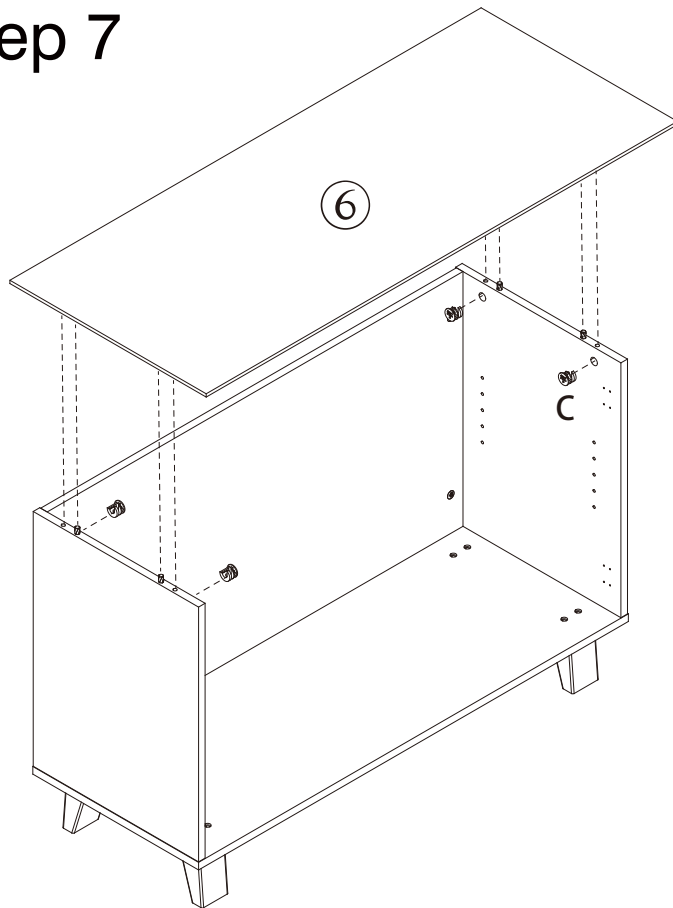
Step 5



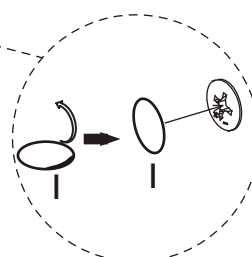
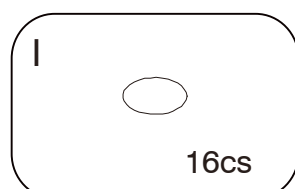
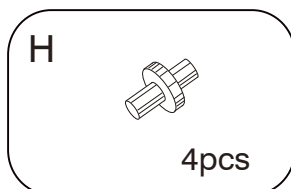
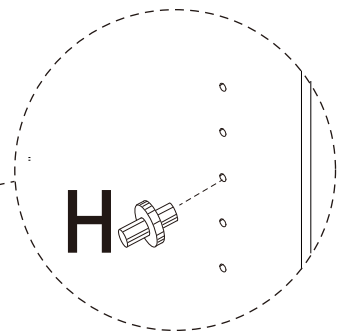
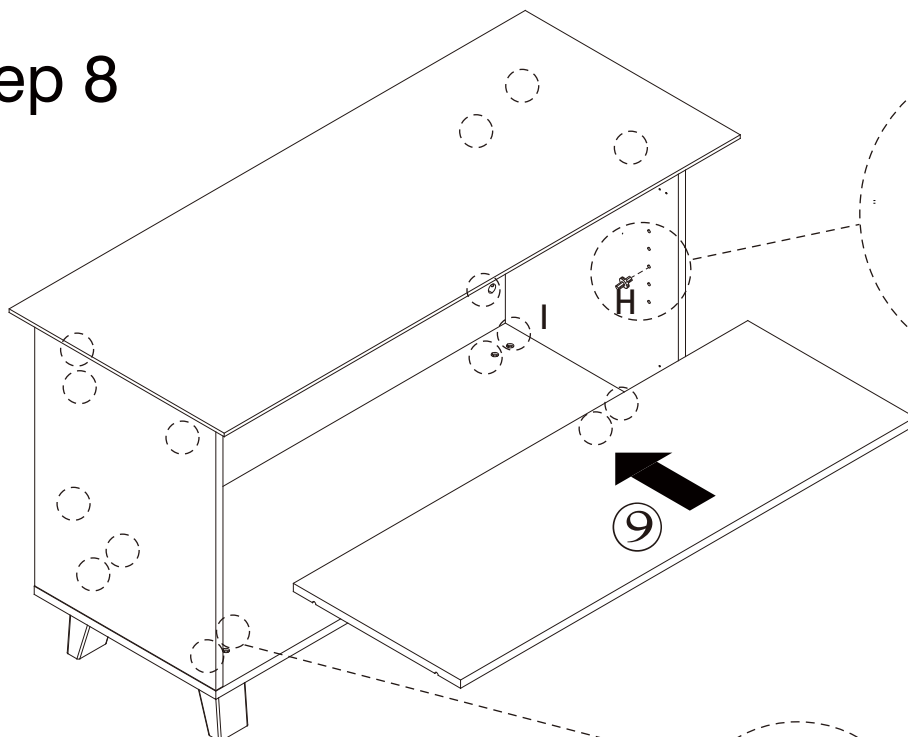
Step 6



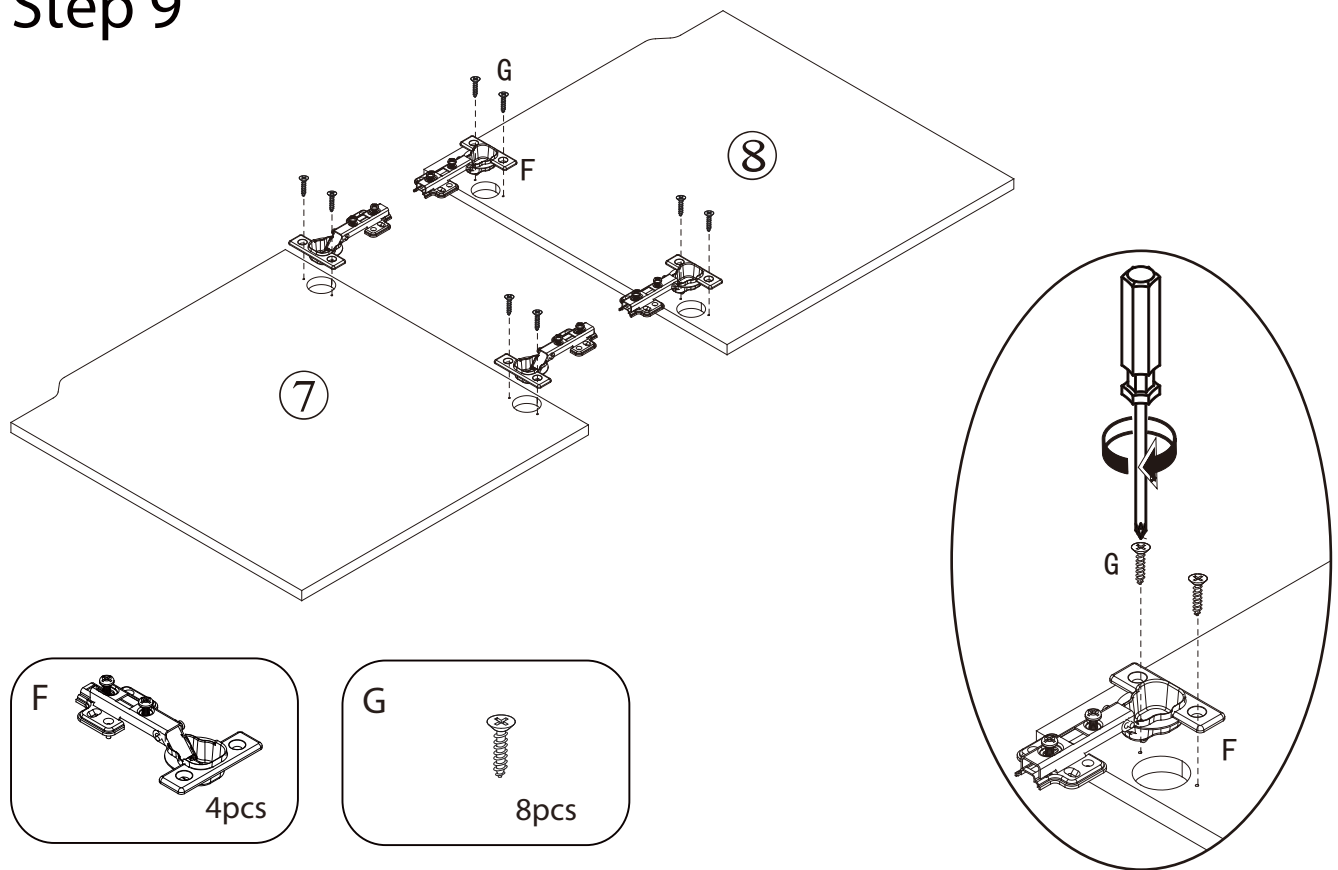
Step 7



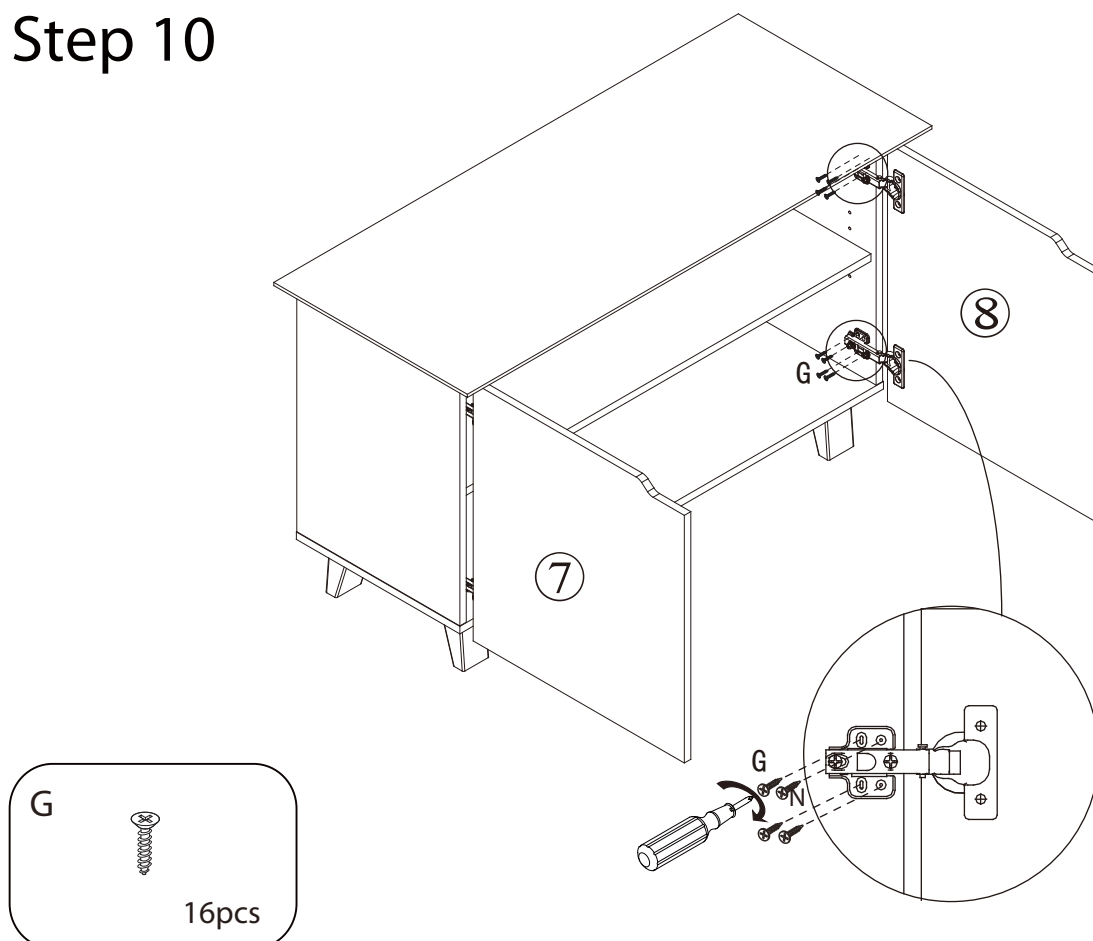
Step 8



Step 9



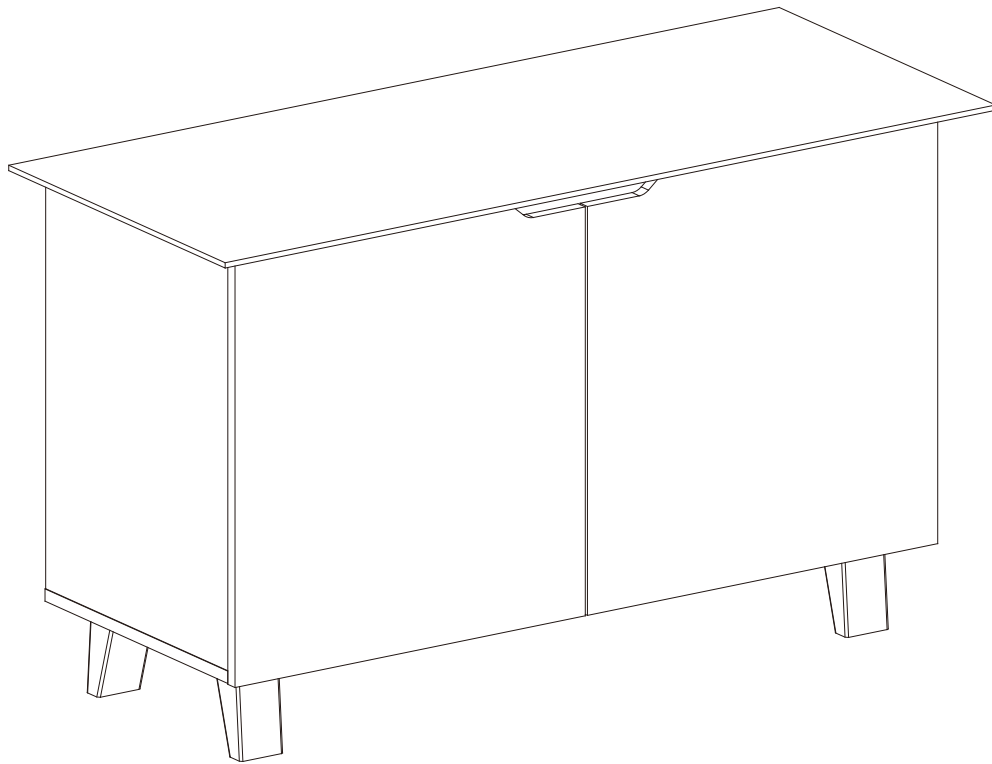
Step 10



Maximum Load Capacity:

Cupboard Top-40kg

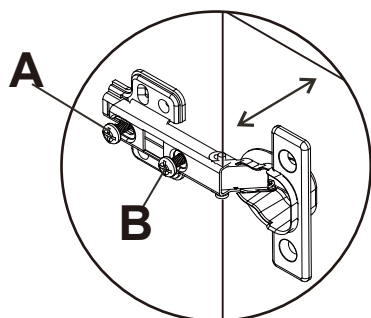
Shelf-10kg



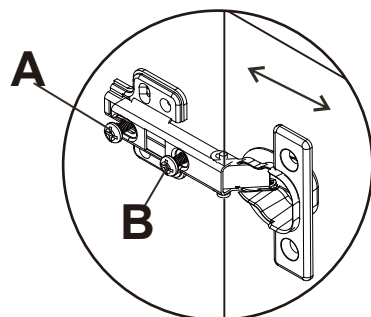
**Your LINEAR CUPBOARD (2CTNS)
is now complete and ready for use.**

hinge adjustment

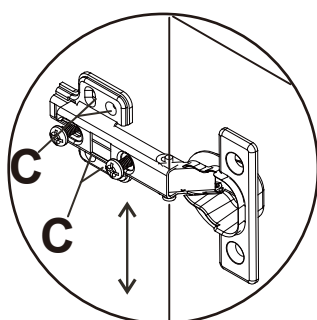
If the doors do not appear square or aligned, loosen or tighten the appropriate screws on each case hinge as illustrated.



1) **Side to side adjustment:**
Loosen screw **A**, adjust gap with screw **B** and re-tighten screw **A**.



2) **Depth adjustment:**
Loosen screw **A**, push hinge arm forwards or backwards, re-tighten screw **A** and secure screw **B** with a 1/4 turn clockwise.



3) **Height adjustment:**
Loosen screw **C**, adjust door height and re-tighten screw **C**.